

FACILITY LOCATIONS

SPIRIT RIVER WASTE MANAGEMENT FACILITY

Location: SW 31-77-05W6M
 Type: AENV Class II Landfill
 Approval #: 137872-01-00

INTERIOR BIOREMEDIATION FACILITY

Location: Jct Shannon Lake Rd/Asquith Rd., Kelowna
 Type: Soil Bioremediation Facility
 Approval #: PR-12217

STRATHCONA BIOREMEDIATION FACILITY

Location: 2400 Bevan Road, Cumberland
 Type: Soil Bioremediation Facility
 Water Treatment Facility
 Approval #: PS-16907

RICHMOND BIOREMEDIATION FACILITY

Location: 1511 Williams Road, Richmond
 Type: Soil Bioremediation Facility
 Approval #: PS-16142

MT. WADDINGTON BIOREMEDIATION FACILITY

Location: Port MacNeil
 Type: Soil Bioremediation Facility
 Approval #: PR-08490, PR 4010

100 MILE HOUSE BIOREMEDIATION FACILITY

Location: Helena Lake Road
 Type: Soil Bioremediation Facility
 Approval #: PR-4994

HAY RIVER TREATMENT FACILITY

Location: Hay River, NT
 Type: Soil Bioremediation Facility
 Approval #: NTR 000023

NORTHERN ROCKIES WASTE MANAGEMENT FACILITY

Location: Mile 285 Alaska Highway, Fort Nelson
 Type: Landfill and Soil Bioremediation Facility
 Approval #: PS-15866, PR-16078

TOWER ROAD WASTE MANAGEMENT FACILITY

Location: NW 27-053-13 W5M
 Carrot Creek
 Type: AENV Class II Landfill
 Approval #: 203668-00-00

GRAND FORKS BIOREMEDIATION FACILITY

Location: Grandby Rd N of Hwy 3
 Type: AENV Class II Landfill
 Approval #: 137872-01-00

MISSION BIOREMEDIATION FACILITY

Location: Dewdney Trunk Road, Mission
 Type: Soil Bioremediation Facility
 Approval #: PR2043

CCS ENERGY SERVICES

a division of CCS Income Trust

GREENWOOD BIOREMEDIATION FACILITY

Location: Deadwood Rd off Hwy 3
 Type: Soil Bioremediation Facility
 Approval #: PR-15295

NEWELL WASTE RECOVERY FACILITY

Brooks
 Location: 1-34-19-15 W4M
 Type: AENV Class II Landfill
 Approval #: WO435

EAST PEACE REGIONAL LANDFILL

Peace River
 Location: SW 1/4 2-84-20 W5M
 Type: AENV Class II Landfill
 Approval #: 20252-01-00

CROWSNEST PINCHER CREEK LANDFILL

Location: NW 1/4 8-7-1 W5M
 Type: AENV Class II Landfill
 Approval #: 18701-00-02

CITY OF MEDICINE HAT LANDFILL

Location: 3/4-13-5 W4M
 Type: AENV Class II Landfill
 Approval #: 78246-01-00

VIRDEN WASTE TREATMENT DISPOSAL FACILITY

Location: SE 1/4 24-11-26 W1M
 Type: AENV Class II Waste Disposal Ground
 Approval #: 3011.135

REGINA WASTE TREATMENT FACILITY

Location: SW 1/4 29-17-20 W2M
 Type: Soil Bioremediation Facility
 Approval #: W7-4-1

NORWAY HOUSE BIOREMEDIATION FACILITY

Location: 4-58-3 W1M
 Type: Soil Bioremediation Facility
 Approval #: 5-012

THE PAS BIOREMEDIATION FACILITY

Location: 2-56-26 W1M
 Type: Soil Bioremediation Facility
 Approval #: T/C

LUMBY BIOREMEDIATION FACILITY

Location: 4.8 km N of Mable Lake Hwy
 Type: Soil Bioremediation Facility
 Approval #: PR-15282

RAINBOW LAKE FACILITY

Landfill Treatment Recovery & Disposal Facility
 Location: SE05-110-06W6
 Type: AENV Class II
 Landfill Phone: 780-956-5650
 Landfill Fax: 780-956-5630
 TR&D Phone: 780-956-5200
 TR&D Fax: 780-956-5201
 Approval #: 193262-00-00

CASLEGAR BIOREMEDIATION FACILITY

Location: 621 Columbia Road
 Type: Soil Bioremediation Facility
 Approval #: PR-00501

LOMOND LANDFILL

Colgate
 Type: SE Industrial Landfill
 Location: NE 27-005-15 W2M
 Phone: 780-524-3336
 Fax: 780-524-3957

VALLEYVIEW LANDFILL

Location: 09-16-69-22 W5M
 Phone: 780-524-3336
 Fax: 780-524-3957

FOX CREEK

TR&D Location: 03-29-62-20 W5M
 Landfill Location: 05-06-62-18W5
 Type: AENV Class II
 Approval #: 207586-00-00
 Landfill Phone: 780-622-2981
 Fax: 780-622-2361
 TR&D Phone: 780-622-3355
 Fax: 780-622-3664

JUDY CREEK TREATMENT RECOVERY & DISPOSAL FACILITY

Location: 04-05-63-11 W5M
 Phone: 780-778-1970
 Fax: 780-778-6957

BOUNDARY LAKE TREATMENT RECOVERY & DISPOSAL FACILITY

Location: 6-26-84-14-W6
 Phone: 403-233-7565
 Fax: 403-261-5612

GULL LAKE FACILITY

Landfill & Treatment Recovery & Disposal Facility
 Location of both: 13-25-13-19 W3M
 Landfill Type: AENV Class II
 Approval #: No SERM permit issued
 Phone: 306-672-3300
 Fax: 306-672-4252

ROCKY MOUNTAIN HOUSE LANDFILL

Location: 1-12-40-09W5
 Type: AENV Class II
 Approval #: 10051-00-02
 Phone: 403-845-7894
 Fax: 403-845-7896

LINDBERG CAVERN

Location: 05-26-56-05W4
 Phone: 780-724-3002
 Fax: 780-724-4961

SILVERBERRY

Landfill & Treatment Recovery & Disposal Facility
 Location: A-18-88-20 W6M
 Phone: 250-827-6834
 Fax: 250-827-6836

MITSUE OILFIELD WASTE FACILITY

TR&D Location: 04-29-72-04 W5
 Landfill Location: 103/04-29-72-04
 Type: AENV Class II
 Approval #: WM 041
 Phone: 780-849-3319
 Fax: 780-849-3866

SALMO BIOREMEDIATION FACILITY

Location: 550 Emerald Mine Road, Salmo
 Type: Soil Bioremediation Facility
 Approval #: MR 16519

EDSON TREATMENT RECOVERY & DISPOSAL FACILITY

Location: 7-18-53-18 W5
 Phone: 780-723-5039
 Fax: 780-723-5067

WOLF LAKE WATER DISPOSAL FACILITY

Location: 09-01-48-14 W5M
 Phone: 780-514-0279
 Fax: 780-514-0280

BRAZEAU TREATMENT RECOVERY & DISPOSAL FACILITY

Location: 11-03-47-11 W5M
 Phone: 780-894-2291
 Fax: 780-723-5067

BIG VALLEY TREATMENT RECOVERY & DISPOSAL FACILITY

Location: 10-36-35-20 W4M
 Phone: 403-876-2636
 Fax: 403-876-2248

HARDISTY CAVERN DISPOSAL FACILITY

Location: 10-30-42-09 W4M
 Phone: 403-888-3565
 Fax: 403-888-3978

CORONATION TREATMENT RECOVERY AND DISPOSAL FACILITY

Location: 12-30-34-09 W4M
 Phone: 403-575-3911
 Fax: 403-575-3927

MARSHALL LANDFILL

Location: SE-21-48-26 W3M
 Type: Landfill Disposal
 Approval #: P004-330
 Phone: 306-387-6507
 Fax: 306-387-6188

UNITY CAVERN DISPOSAL FACILITY

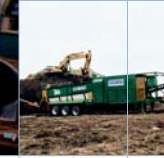
Location: 15-04-40-22 W3M
 Phone: 306-228-3001
 Fax: 306-228-4290

KINDERSLEY TREATMENT RECOVERY & DISPOSAL FACILITY

Location: 16-16-30-23 W3M
 Phone: 306-463-6220
 Fax: 306-463-3479

LA GLACE FACILITY

TR&D Location: 12-08-73-08 W6M
 Landfill Location: NE15-73-09
 Type: AENV Class II
 Approval #: 154484-00-00
 Landfill Phone: 780-356-0007
 Landfill Fax: 780-356-2159
 TR&D Phone: 780-766-3111
 TR&D Fax: 780-766-2959



LANDFILL SERVICES



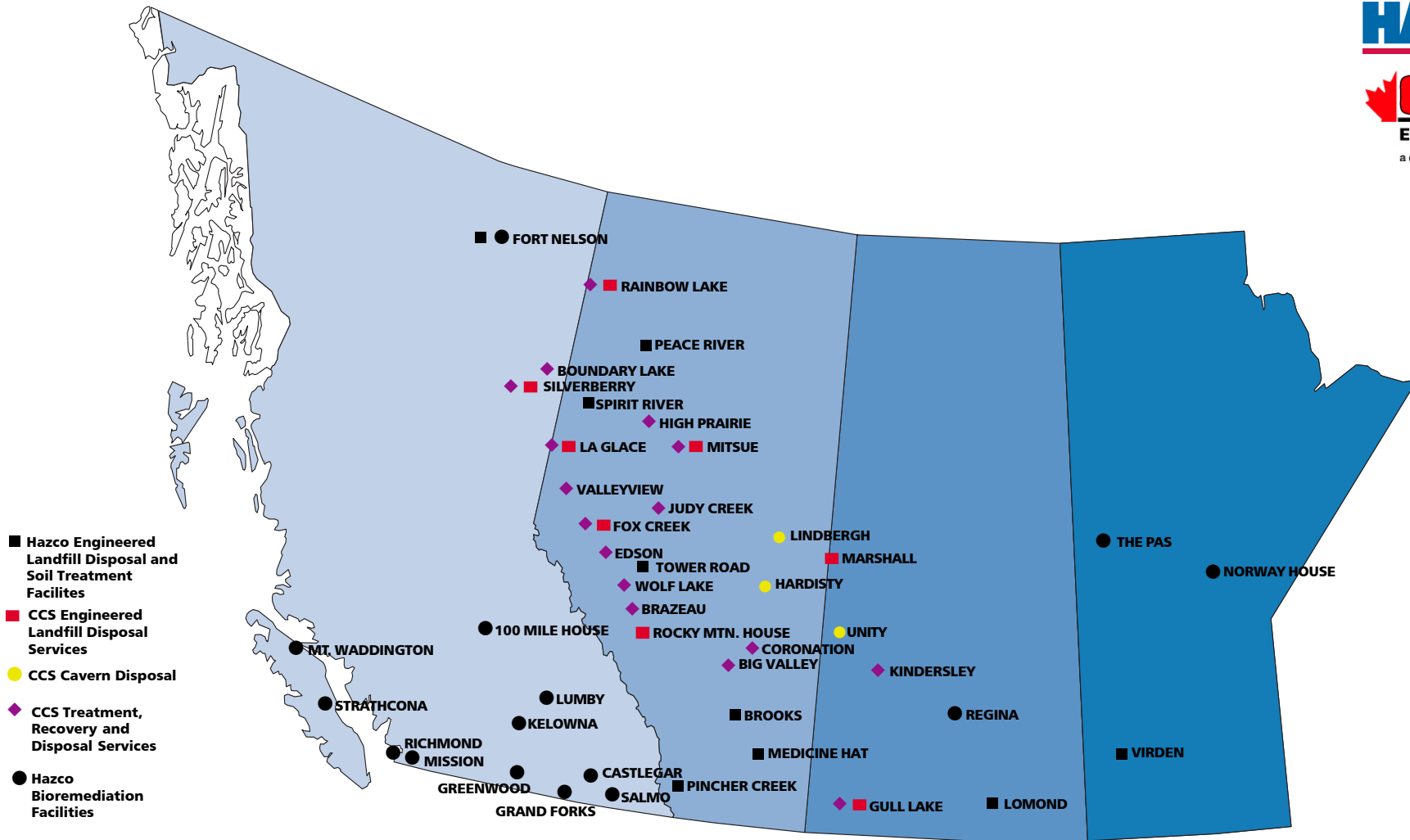
www.hazco.com



Secure Landfill Disposal
 Engineered Liner Systems
 Comprehensive Transportation Services
 Specialized Excavation and Bioremediation Equipment

HAZCO

CCS
ENERGY SERVICES
a division of CCS Income Trust



- HAZCO Engineered Landfill Disposal and Soil Treatment Facilities
- CCS Engineered Landfill Disposal Services
- CCS Cavern Disposal
- ◆ CCS Treatment, Recovery and Disposal Services
- HAZCO Bioremediation Facilities

For service, pricing and to arrange transportation and disposal, please contact the landfill sales group at [1-800-667-0444](tel:1-800-667-0444) / info@hazco.com

Calgary (403) 297-0444
 Edmonton (780) 456-1444
 Grande Prairie (780) 402-0031
 Spirit River (780) 765-3745

Regina (306) 569-8370
 Winnipeg (204) 832-4561

Richmond (604) 214-7000
 Vancouver Island (250) 743-3946
 Kelowna (250) 769-8299
 Fort St. John (250) 785-9001